

PRODUCT INFORMATION PACKET

Model No: 5KH37PN41X

Catalog No: H159

1/6 HP Fan and Blower HVAC/R Motor, 1 phase, 1200 RPM, 115 V, 48Z Frame, ODP
Self Cooled Motors



Nameplate Specifications

Output HP	0.17 Hp	Output KW	0.13 kW
Frequency	60 Hz	Voltage	115 V
Current	4 A	Speed	1140 rpm
Service Factor	1.35	Phase	1
Efficiency	50.5 %	Power Factor	0
Duty	Continuous	Insulation Class	A
KVA Code	P	Frame	48Z
Enclosure	Drip Proof	Thermal Protection	AUTO
Ambient Temperature	40 °C	Drive End Bearing Size	6203
Opp Drive End Bearing Size	6203	UL	Recognized
CSA	Yes	CE	N

Technical Specifications

Electrical Type	Split Phase	Starting Method	SM
Poles	6	Rotation	Counterclockwise/Clockwise
Mounting	Resilient Base	Motor Orientation	ANY
Drive End Bearing	BALL	Opp Drive End Bearing	Ball
Frame Material	Rolled Steel	Overall Length	10.8 in
Frame Length	6.62 in	Shaft Diameter	0.500 in
Shaft Extension	1.88 in	Thru-bolts Extension	0 in
Connection Drawing	52A105379AA	Outline Drawing	52A101908P6

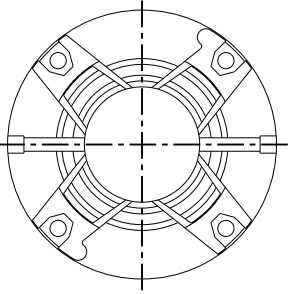
This is an uncontrolled document once printed or downloaded and is subject to change without notice. Date Created:03/11/2020

THIRD ANGLE PROJECTION

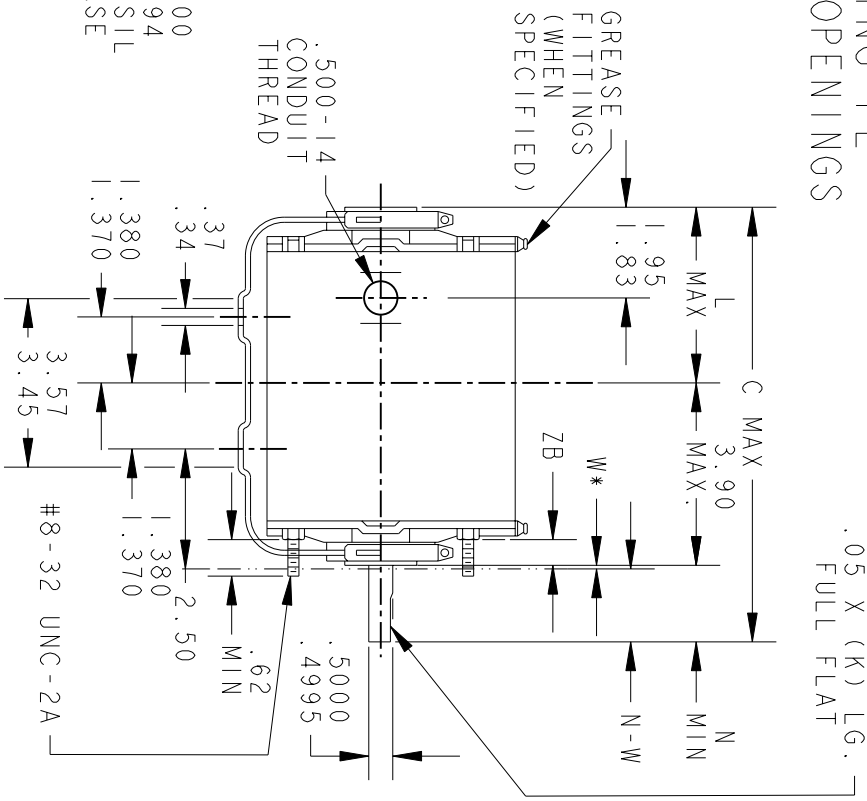
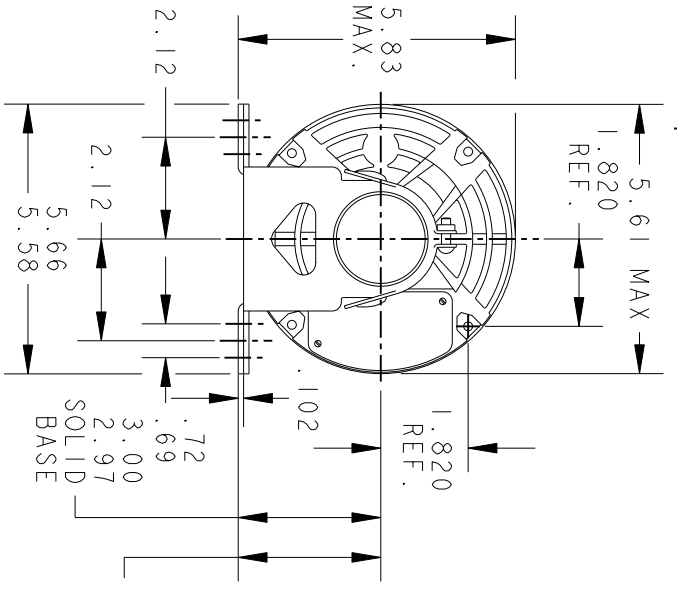


REVISIONS

REV.	DESCRIPTION	DATE	APPROVED
8	CHG TO RBC FORMAT PER IS 05-1777	12/15/05	RAJKUMAR



VIEW SHOWING PE VENTILATION OPENINGS



*W IS A CLEARANCE DUE TO VARIATION IN PARTS & ASSEMBLY.

PT	TYPE	GE SIZE	NEMA FR	C	K	L	N	N-W	ZB
6	KH	37	48Z	10.78	1.54	5.05	1.88	2.01/1.79	.55/.52
5	KH	36	48Z	10.38	1.54	4.65	1.88	2.01/1.79	.55/.52
4	KH	33	48Z	9.94	1.91	3.84	2.25	2.38/2.16	.55/.52
3	KH	35	48Z	9.95	1.54	4.22	1.88	2.01/1.79	.55/.52
2	KH	33	48Z	9.57	1.54	3.84	1.88	2.01/1.79	.55/.52
1	KH	32	48Z	9.32	1.54	3.59	1.88	2.01/1.79	.55/.52

SIGNATURES		DATE
MODEL		
DETAIL	JPK	01/15/16
CHECKED		
ENGRG		
MFG		
QUALITY		
ISSUED	MDP	07/10/16
FOR ADDITIONAL INFO REFER TO:		
APPLIED PRACTICES		
DIMENSIONS ARE IN INCHES		
MATERIAL	SOLID MODEL: 52A101908	



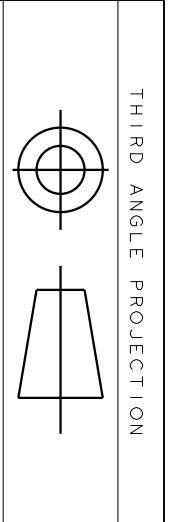
REGAL-BELOTT CORPORATION

TITLE OUTLINE

FORM N- GENERAL PURPOSE MOTOR- DRIP PROOF- SOLID OR RESIL BASE- BALL OR SLEEVE BEARING

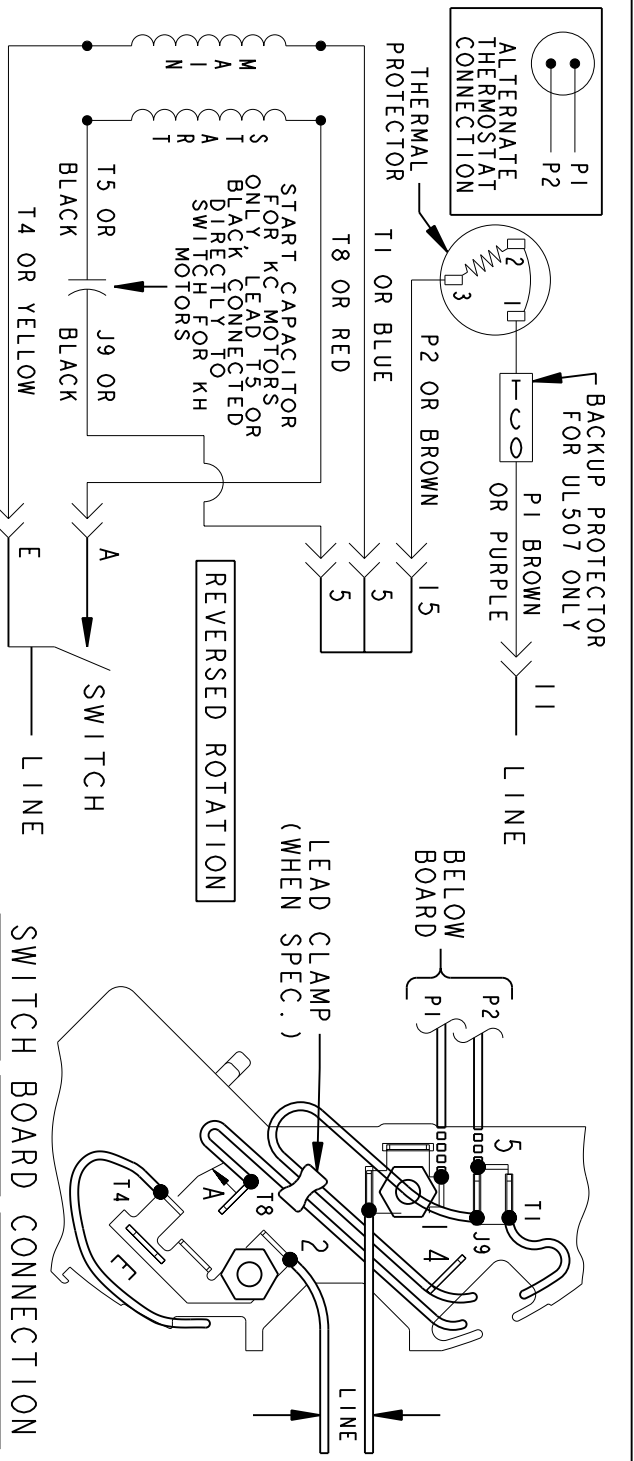
SCALE: 0.250 REF. No.: 52A101908

SIZE A DRAWING REV 8 SHEET 1 of 1



REV.	DESCRIPTION	DATE	APPROVED
6	UPDATED FORMAT	12/01/05	MAM

EITHER ROTATION-SINGLE VOLTAGE-TYPE KC OR KH-WITH THERMAL PROTECTOR



NOTE #1 - TO REVERSE ROTATION INTERCHANGE RED (T8) AND BLACK (J9-KC OR T5-KH) LEADS.
 NOTE #2 - WHEN MORE THAN ONE CAPACITOR IS USED CONNECT IN PARALLEL.

SWITCH (C) - 115D958AB REF. DIAG. - 121A851 CONN. LABEL - 52X332048

SIGNATURES	DATE
MODEL M.D. PAPE	06/29/87
DETAIL	
CHECKED	
ENGRG	
MFG	
QUALITY	
ISSUED	M.D.P. 03/08/00
SOLID MODEL: 52A105379AA	

REGAL-BELOIT CORPORATION

REGAL-BELOIT

CONNECTION DIAGRAM

FMF - 30 FR SWITCH REDESIGN

SCALE: 1.000 REF. No.:

52A105379AA

REV 6